



AUROGENE

#weservescience

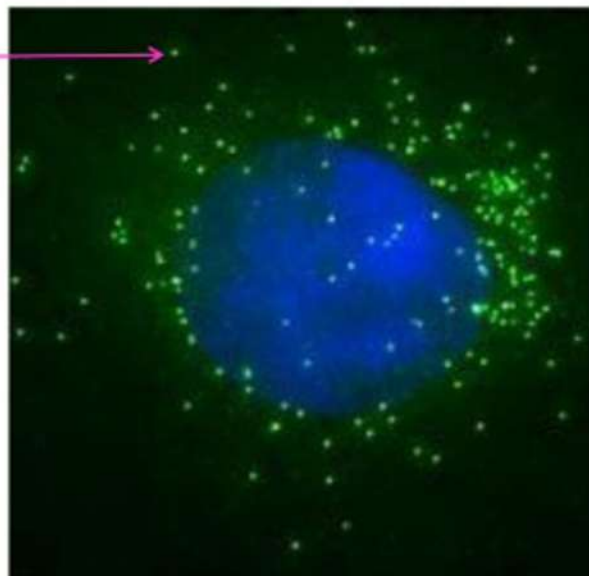
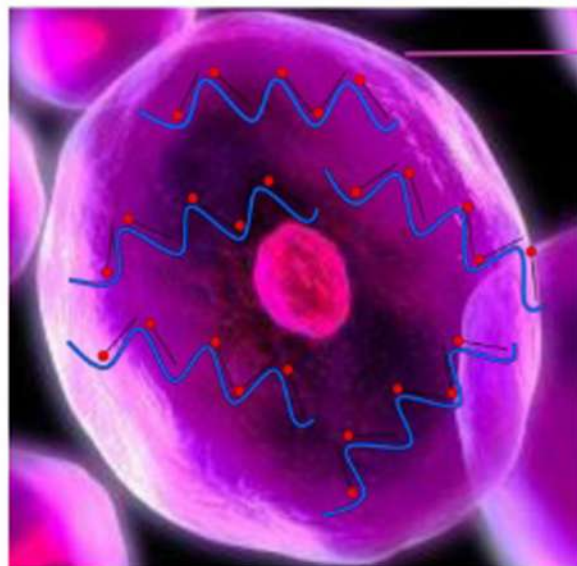


PRODOTTI - VELOCITA' - COMPETENZA - DINAMISMO - SOLUZIONI

Aurogene is pleased to announce the exclusive distribution for Italy of
Stellaris RNA Fish
Fluorescence in situ hybridization

More spots = more RNA molecules

Multiple probes bind to RNA to make one "spot" of light



Presented here is a new method for in situ RNA detection, the Stellaris RNA FISH technology, which enables simultaneous detection, localization, and quantification of individual RNA molecules at the cellular level. This technique provides a high degree of specificity and sensitivity, is ideal for applications that analyze transcription site activity, protein-RNA interactions and mRNA translocation events, and holds promise for future diagnostic applications.

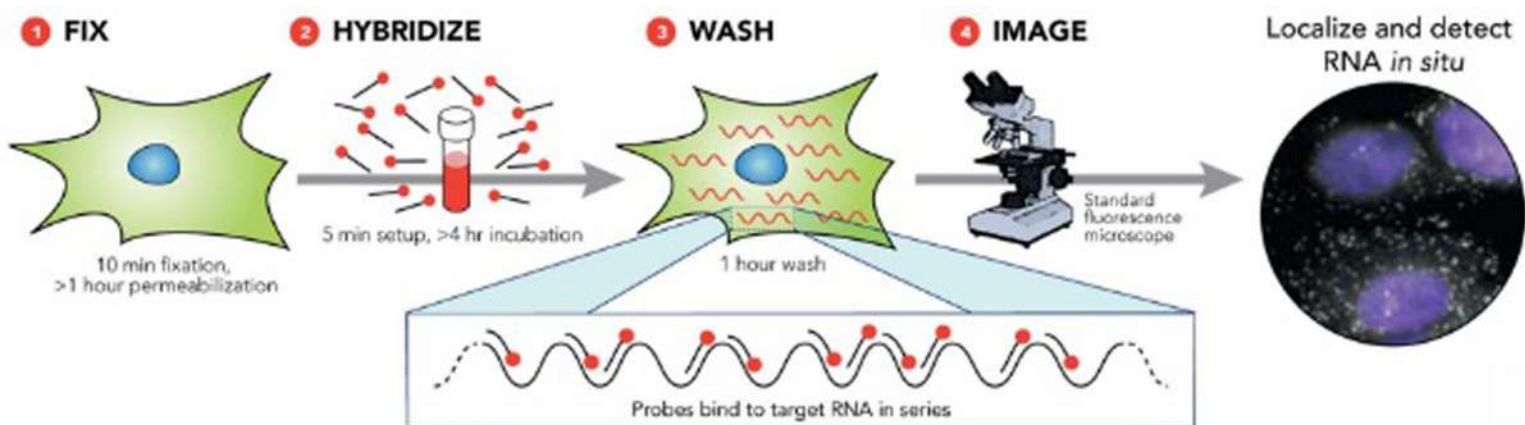
The Next Step In RNA FISH

Methods for in situ RNA detection have been in existence for some time, but these techniques have thus far faltered for reasons including specificity, incompatibility with existing research methods, or overly complex preparation methods. Stellaris RNA FISH technology utilizes a set of simple fluorescent probes which bind along the length of target RNA. The use of multiple probes ensures that positive signal is clearly visible above background without need for amplification, while fluorescence due to stray probes falls below the threshold of detection.

The simple structure and small size of the Stellaris probes makes permeabilization possible without protease treatment. As a result, the procedure is less cumbersome than existing methods and more easily integrates with complementary detection techniques such as fluorescent antibody assays.

Method

The Stellaris RNA FISH protocol is comparatively simple, and consists of four steps, as shown in figure below. No exotic reagents are required, and the entire process can be completed in less than a day.



Step 1: Prepare sample

The sample is adhered or sectioned onto a #1 coverglass and permeabilized with 70% EtOH. Slight variations in sample preparation between different organisms and sample types are covered in the online protocols. No protease is required.

Step 2: Hybridize Probes

For most samples, hybridization can be completed in 4 hours at +37 °C in a generic laboratory incubator.

Step 3: Wash Sample

After hybridization, wash buffer with short incubation periods is used to remove excess probes. The total time for this step is 1 – 1.5 hours.

Step 4: Image Sample

At this point, the sample can be imaged using a standard fluorescence microscope.

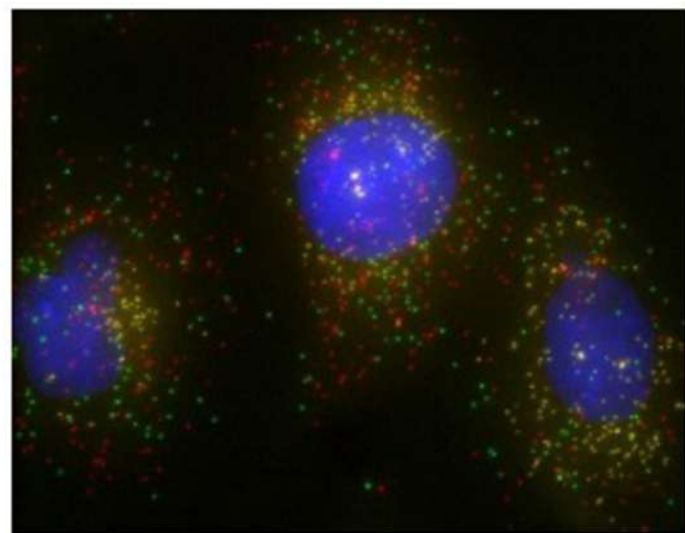
Sensitivity and Specificity

The large number of probes in a Stellaris RNA FISH assay ensures a high level of sensitivity. At least 25 unique probes, each with a single fluorophore, need to tile along the target RNA for a single spot to become visible. While there are various factors such as buffer composition and hybridization temperature that can improve the binding of probes to target RNA, hybridization is, at its root, a stochastic process. As a result, assays which depend on a single probe or a small number of probes will fail to detect a small number of the target RNA. With a larger number of probes, built in redundancy minimizes the risk of a false negative, as enough probes will hybridize to target RNA to allow detection. The effect of the stochastic nature of hybridization can be observed in the small variation in fluorescence among positive spots in a Stellaris FISH assay.

Stellaris FISH assays are also highly specific due to the large number of probes. Positive signal is only identified from the combined localized fluorescence of multiple probes. Off-target binding of probes generates weak and diffuse fluorescence, well below the threshold for specifically targeted mRNA detection. The punctate spots which indicate positive signal clearly stand out from background, and the distinction can be further improved with background subtraction algorithms common in many imaging software packages. In contrast, detection methods which use multiply labeled probes have the potential for a single stray probe to be detectable above background.

Multiplex Capability

Stellaris RNA FISH probes are available with a wide variety of fluorophores, including Biosearch Technologies' CAL Fluor and Quasar dyes. Like qPCR, the variety of fluorophores allows the technology to be used in a multiplex assay. The dye choices in a multiplex assay are largely determined by the filters available to a researcher, but it is certainly possible to design an assay including a DAPI nuclear stain and three Stellaris FISH probe sets labeled with reporter dyes with minimal spectral overlap.



Highly cited:

- Over 3000 publications
- Over than 33% published in Cell, Nature or Science

Let's go FISH-ing for RNA with Stellaris

*For more information please
contact the addresses below*

www.aurogene.eu
info@aurogene.eu
technical@aurogene.eu
tel 06.98185510
fax 06.62275842



AUROGENE

#weservescience